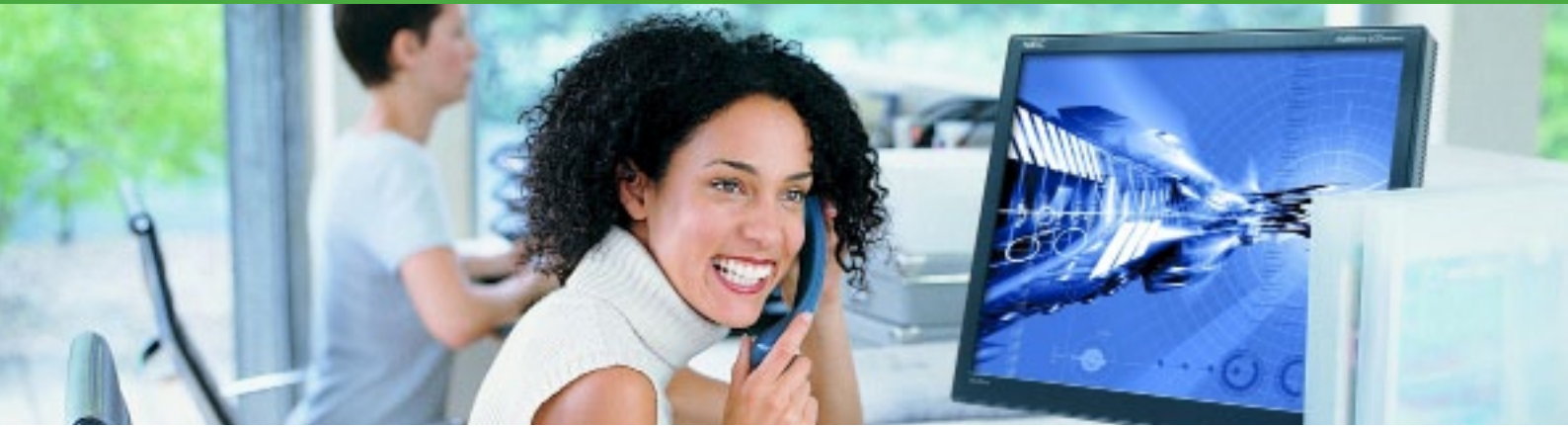


22-inch Widescreen Desktop LCD Monitor

NEC AccuSync AS221WM-BK



High Quality without the High Price Tag

The NEC AccuSync AS221WM-BK sets new standards in value, offering you the latest display technology without having to break your budget. They deliver eco-friendly, technology-rich and cost-conscious display solutions to small-to-medium sized businesses and home office users. They increase productivity by expanding your working area to simultaneously view multiple application windows.

It's Easy to be Green

In addition to consuming up to 50% less energy than conventional LCD displays of the same size and containing 50% less mercury content than comparable displays, the NEC AccuSync Series is loaded with features that promote environmental consciousness, including: **ECO Mode™**, a **carbon footprint meter**, compliance with **ENERGY STAR 5.0**, **TCO 5.0** and **EPEAT™ Silver**, and a significant reduction in packaging materials to help reduce shipping costs and environmental waste.



Features and Benefits

- **ECO Mode** function helps save power, reduce heat and extend the life of the display by allowing the user to dim/reduce the brightness.
- **Intelligent Power Manager (IPM)** system shifts the monitor to a lower power consumption level or automatically powers it down when it is on but not in use.
- **Carbon footprint metre** helps track and calculate the savings of green gas emissions.
- **EPEAT Silver compliance** ensures the displays reduce hazardous waste and electricity usage, resulting in lower energy costs and increased protection for the environment.
- **ENERGY STAR 5.0 and TCO 5.0** compliance reduce electrical costs and lowers total cost of ownership.
- **Ambix® dual-input technology** allows for digital/analog compatibility with upgraded video cards and software as well as connection to two systems.
- **Touch integration-enabling design** increases application options.
- **Built-in multimedia speakers** provide sound for business applications such as conferencing.
- **NaViSet™ software** (available via download) offers an expanded and intuitive interface, allowing you to more easily adjust display settings via mouse and keyboard.
- **Rapid Response technology** delivers virtually uninterrupted, undistorted viewing of high-speed, full-motion video.

Detailed Specifications

Panel Technology	TN
Viewable Image Size	22"
Aspect Ratio	16:10
Native Resolution	1680 x 1050
Pixel Pitch	0.28mm
Pixels Per Inch	90@ native resolution
Backlight Type	CCFL
Brightness (typical)	250cd/m2
Contrast Ratio (typical)	1000:1
Viewing Angle (typical)	176° Vert., 176° Hor. (88U/88D/88L/88R) @ CR>5
ResponseTime (typical)	5ms
Displayable Colours	More than 16.7 million
Horizontal (Analog/Digital)	31.5-82.3 kHz
Vertical	56-75 Hz
Video Input	Analog RGB 0.7 Vp-p/75 Ohms
Sync	Separate Sync: TTL Level (Positive/Negative) Composite Sync: TTL Level (Positive/Negative) Composite Sync on Green: (0.3Vp-p negative 0.7Vp-p positive)
Input Connectors	DVI-D, VGA 15-pin D-sub
Power Consumption (typical)	On: 24W, Power Savings Mode: 0.42W
Dimensions (WxHxD)	Net (with stand) 19.9 x 15.4 x 8.7 in. / 505.2 x 390.9 x 221.8mm Net (without stand) 19.9 x 13.5 x 2.6 in. / 505.2 x 342.9 x 65.2mm
Weight	Net Weight (with stand) 11 lbs. / 5 kg Net Weight (without stand) 10.4 lbs. / 4.7 kg
VESA Hole Configuration Specifications	100 x 100mm
Operating Temperature	41-95°F / 5-35°C
Operating Humidity	20-80%
Operating Altitude	6562 ft. / 2000m
Storage Temperature	14-140°F / -10-60°C
Storage Humidity	10-85%
Storage Altitude	40,000 ft. / 12,192m
Environmental Compliance	ENERGY STAR 5.0, TCO 5.0, EPEAT Silver, RoHS
Limited Warranty	3 years parts & labour, including backlight

For more information, visit www.nec.com.au, email displays@nec.com.au or call 131 632

About NEC Australia Pty Ltd. NEC Australia is a leading supplier and integrator of ICT solutions to carriers, government and businesses. With over 800 staff and 200 partners, we research, develop and deploy advanced IT/Network communication solutions and services using best-of-breed technologies in multi-vendor environments. Our business encompasses Hosted Application and Network Services, Systems Integration, IP Communications Servers, PBX, Broadband Access Systems, Data Centre and Cloud Technology Services along with Digital Signage and Data Technology products.

CS_Arts Vic 1 v. 20.11.09

NEC Australia Pty Ltd reserves the right to change product specifications, functions, or features, at any time, without notice. Please refer to your local NEC representatives for further details. Although all efforts have been made to ensure that the contents are correct, NEC shall not be liable for any direct, indirect, consequential or incidental damages resulting from the use of the equipment, manual or any related materials. The information contained herein is the property of NEC Australia Pty Ltd and shall not be reproduced without prior written approval from NEC Australia Pty Ltd.

Copyright © 2010 NEC Australia Pty Ltd. All rights reserved. NEC, NEC logo, and UNIVERGE are trademarks or registered trademarks of NEC Corporation that may be registered in Japan and other jurisdictions. All other trademarks are the property of their respective owners. All rights reserved. Printed in Australia. Note: This disclaimer also applies to all related documents previously published.