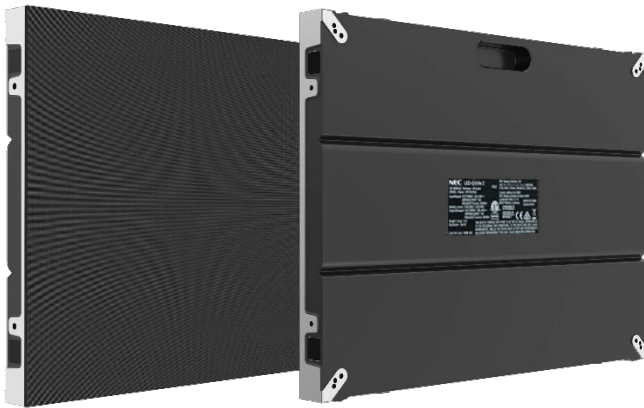


Product Information Sheet
Indoor LED 1.5 mm Black Face LED Panel

LED-N-015



Quality, Performance and Service

For bezel-free viewing experiences using vivid LED technology, NEC's LED Solution delivers essential visualization for scalable large digital surfaces. Even for cost-conscious deployments for presentation and signage, NEC's LED Solution provides long lasting NEC quality with industrial-grade power supplies in easy to install.

The ultra-lightweight die-cast chassis allows for accurate and seamless installation and rapid maintenance from the front.

Either free standing or for seamless integration into interiors, the slim design is sleek and chic as befits the latest innovation in digital content delivery. Benefit from excellent viewing angles, consistent vibrant colours, superb brightness and long lasting performance for high impact display projects.

Benefits

Care-free installation – with bundled solutions that deliver all you need to get your LED video wall up and running.

Large scale for perfectly detailed imagery – completely bezel-less design with high contrast rates deliver an unhindered viewing experience.

Slim design – with a flush rear profile, LED modules can be integrated very close to the wall with no gap necessary due to minimal heat emission.

Front serviceable modules – with front and rear access to the LED modules, maintenance is easy.

Visual excellence – high contrast and high brightness is inherent in LED delivery, benefit from NEC's long lasting quality.

Product information

| | |
|---------------|-----------------------------|
| Product Name | LED-N-015 |
| Product Group | Indoor LED 1.5 mm LED panel |

Display

| | |
|--|--------------------|
| Pixel Configuration | 3-in-1 SMD (Black) |
| LED type | SMD (2121) |
| Panel Size [mm] | 640x480 |
| Aspect Ratio | 3:2 |
| Pixel Pitch [mm] | 1.53 |
| Brightness (max.) [cd/m ²] | 800 |

| | |
|------------------------|-------------------------------|
| Lifetime | 100000 hrs (50% brightness) |
| Contrast Ratio (typ.) | 5000:1 |
| Viewing Angle [°] | 140 horizontal / 140 vertical |
| Dimming Capability | 256 levels |
| Colour Processing | 14 bit |
| Colours | 4.4 trillion |
| LED Driving Method | 1/30 dynamic scan |
| Frame Rate | 50/60 Hz |
| Refresh Rate [Hz] | < 3840 |
| Colour Temperature [K] | 2500 - 1000 |

Screen Resolution

| | |
|-------------------------------------|-----------|
| Resolution | 418 x 312 |
| Resolution per m ² | 424,531 |
| Number of Pixel per module [dot] | 209 x 104 |
| Number of Pixel per card [dot] | 21,736 |

Connectivity

| | |
|---------------------|-------------------------------------|
| Input Video Digital | 1 x HDMI 2.0; 1 x DP 1.2; 1 x DVI-D |
| Input Control | Gigabit Ethernet |

Electrical

| | |
|-----------------------------|-------------------------------------|
| Total Power Consumption [W] | 50 typ. / 150 max. |
| Power Consumption typ. [W] | 160 per m ² (normal use) |
| Power Consumption max. [W] | 480 per m ² |

Environmental Conditions

| | |
|----------------------------|-----------|
| Operating Temperature [°C] | -10 to 50 |
| Operating Humidity [%] | 10 to 90 |

Mechanical

| | |
|---|----------------------------------|
| Dimensions (W x H x D) [mm] | 640 x 480 x 74 |
| Dimensions (W x H x D) [mm] per module | 320 x 160 x 17 or 160 x 160 x 17 |

| | |
|-------------|-----|
| Weight [kg] | 7.5 |
|-------------|-----|

Additional Features

| | |
|------------------|---|
| Shipping Content | LED Controller; LED Modules; Pixel Card Removal Tool; Spare Parts Kit |
| Manufacturer | NEC |
| Serviceability | Front Service |
| IP Level | IP45 |
| Certifications | CCC; CE; ETL; FCC Class A; RoHS;RCM |
| Warranty | 3 years conditional warranty |

For more information:

 nec.com.au  contactus@nec.com.au  131 632

Corporate Headquarters (Japan)
NEC Corporation
www.nec.com

Australia
NEC Australia Pty Ltd
www.nec.com.au

North America (USA)
NEC Corporation of America
www.necam.com

Asia Pacific (AP)
NEC Asia Pacific
www.sg.nec.com

Europe (EMEA)
NEC Enterprise Solutions
www.nec-enterprise.com

v.01.07.22 | LED-N-015

NEC Australia Pty Ltd reserves the right to change product specifications, functions, or features, at any time, without notice. Please refer to your local NEC representatives for further details. Although all efforts have been made to ensure that the contents are correct, NEC shall not be liable for any direct, indirect, consequential or incidental damages resulting from the use of the equipment, manual or any related materials. The information contained herein is the property of NEC Australia Pty Ltd and shall not be reproduced without prior written approval from NEC Australia Pty Ltd.

©2021 NEC Australia Pty Ltd. All rights reserved. NEC and NEC logo are trademarks or registered trademarks of NEC Corporation that may be registered in Japan and other jurisdictions. All other trademarks are the property of their respective owners. All rights reserved. Printed in Australia. Note: This disclaimer also applies to all related documents previously published.

NEC