

Orchestrating a brighter world

NEC

NEC Xtreme Series

Indoor LED



NEC Direct View LED

Intelligent display solutions for a brighter world

NEC Indoor LED

NEC's Indoor LED displays provide crystal clear images for the ultimate visual experience thanks to high quality processing and color matched LEDs. Optimum display resolution can be achieved indoors regardless of viewing distance with pixel spacing options from 1.0 mm to 4.0 mm; plus, the front serviceable module allows easy access and quick maintenance when needed.

Picture quality is uniform across a seamless image. Designed for vibrant and colorful HDR content visualization, the NEC Indoor LED series is the ideal solution for auditoriums, reception areas, retail stores, control and meeting rooms, museums, broadcast studios and airports or train stations. NEC offers full design & planning services plus post installation support, ensuring you get a custom tailored solution allowing you to focus on what's most important – your business.

NEC Xtreme Series LED Panel



16:9 Modularity allows pixel perfect configuration for FHD, 4k and even 8k resolutions.



Cable-Less Panel Interconnection provides quick installation and a slender profile.



Front Serviceable and Installable ideal for wall mounted applications.



A Wider Viewing Angle enables more vantage points within a given space.



Higher Contrast delivers a better viewing experience for detailed content like spreadsheets, medical imagery and CAD drawings.



Black SMD LEDs provide a smoother surface, low reflection and high contrast.



Auto calibration makes panel replacement speedy without disrupting picture quality.



Bonded Resin Face increases durability and reduces the spares required.



100,000 hours lifespan provides a significantly lower total cost of ownership over other technologies.

NEC offers full design & planning services plus post installation support

NEC Xtreme LED uses modular components that are universal to all Pixel Pitch sizes

Cabinet

Xtreme Series Cabinet

- Fully rear sealed
- 640mm x 360mm
- 16:9 Design
- Aluminium die casting

Receiver Card

A8S Receiver Card

- HDR Capability

Hub Board

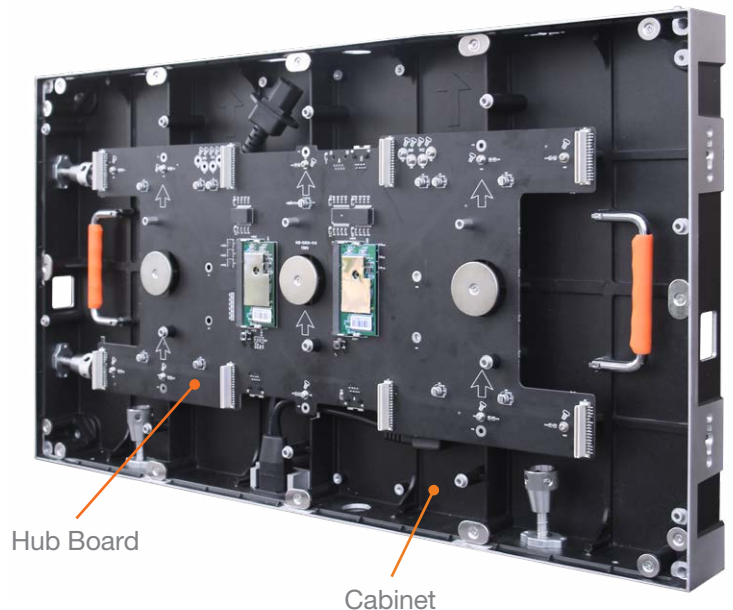
Xtreme Series Hub Board

- Full signal and power redundancy capabilities.

Power Supply

Xtreme Series Power Supply Unit

- 240v/60Hz - 200 W

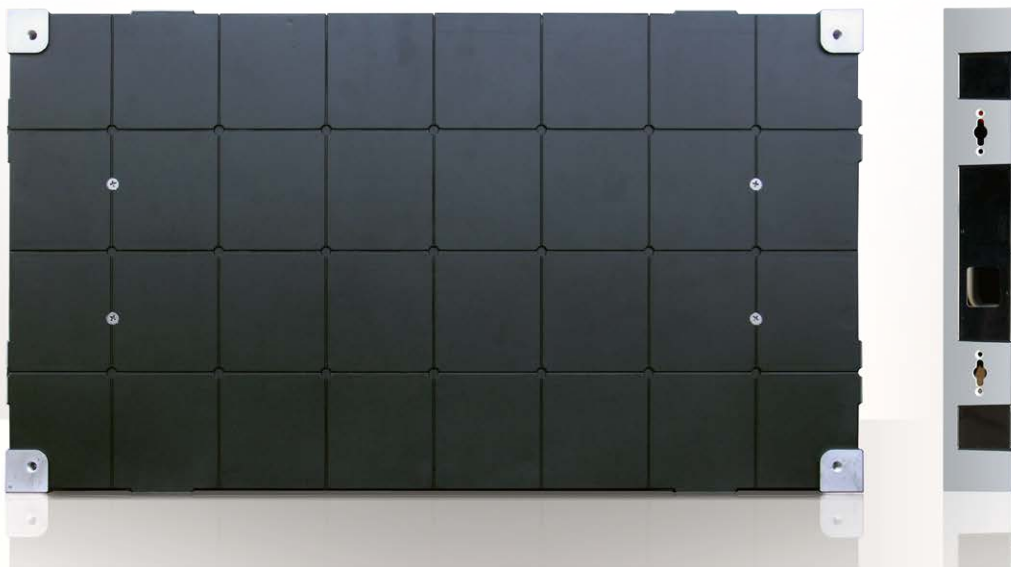


Modular components across the Xtreme LED range mean you have greater flexibility in supporting and upgrading your LED screen when the time is right.

Upgradeable resolution by simply changing tiles If your initial budget only allowed for a high pixel pitch, down the track with later funding you can upgrade the resolution of the Xtreme LED screen and only have to purchase the LED Tile components.

Redundant signal and power supply capabilities Able to support high availability requirements in critical environments.

Simplifying support Enables common spares for service if you have multiple Xtreme LED screens.

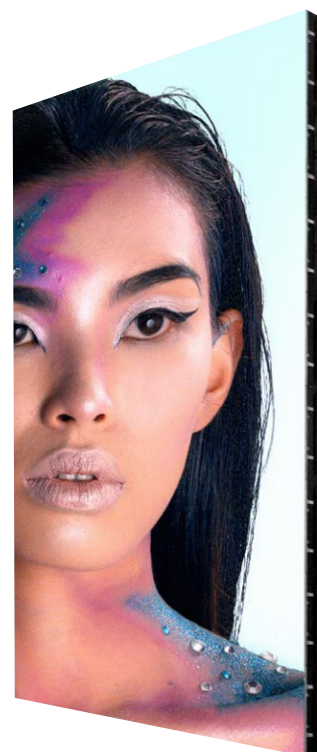


Xtreme Series Product Information

NEC-LED:	X10i	X12i	X13i	X14i	X16i
Pixel pitch	1.0	1.2	1.3	1.4	1.6
Pixel density	1,000,000	640,000	562,500	473,611	360,000
Cabinet pixels	640x360	512x288	480x270	440x248	384x216
Power consumption	160 / 700	150 / 680	130 / 580	115 / 490	110 / 440
NEC-LED:	X18i	X20i	X25i	X29i	X40i
Pixel pitch	1.8	2.0	2.5	2.9	4.0
Pixel density	283,333	250,000	160,000	118,403	62,500
Cabinet pixels	340x192	320x180	256x144	220x124	160x90
Power consumption	95 / 420	90 / 400	95 / 400	90 / 400	90 / 380

Technical Specifications (Common across all models)

Cabinet size	640 x 360 x 58 (W x H x D:mm)
Frame frequency	50/60, 120 Hz
Brightness	100 - 1200 cd/m2
Lamp Type	SMD0808, SMD1010, SMD1515, SMD2121
Pixels calibration	Standard colour and brightness calibration
Grey scale	14 bit
Color temperature	2500 - 10000 K
Refresh rate	Variable, Default - 3,840 Hz
Drive mode	PWM Constant Current
Operating voltage	AC 110 - 240 V, 50/60 Hz
LED life estimate	100000 hours
Operating temperature / humidity	-20 ~ + 60 °C / 10~90 %RH
Storage temp	-25 ~ + 60 °C
Weight	7.4 kg / panel



Captivate an audience with visually stunning content using **NEC Indoor LED Xtreme Series**

NEC Xtreme Series Indoor LED will create a dazzling feature for your audience and provide a no fuss experience for you.

Upgradeable resolution with a simple change of tile

An ultra smooth finish capable of touch interaction

Redundant power supply/signal back up

Available in a range of pixel pitches

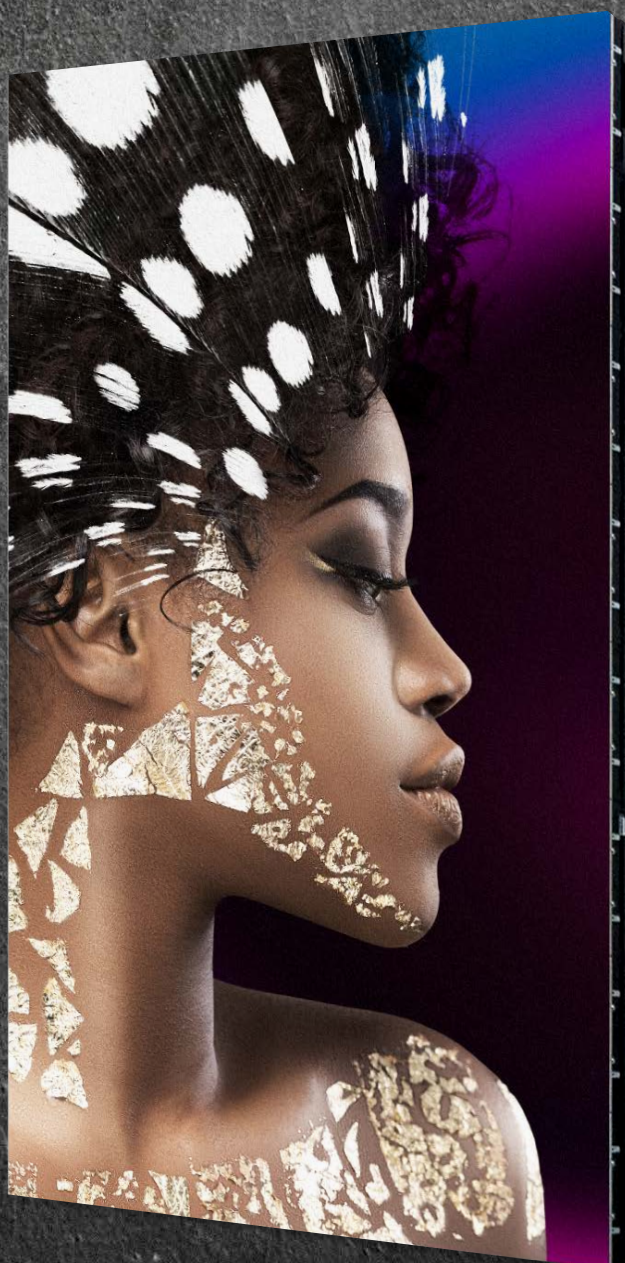
Swap out tiles in less than 30 secs

Splash proof for higher safety

170 degree viewing angle

Cleaner aesthetics

Delivering the ultimate visual experience with vibrant colour across a seamless image, NEC Xtreme Series Indoor LED is the new benchmark for your display solutions. Xtreme's clever design and features ensure smooth installation, operation and support for your application.



Tailor optimum display resolution for any viewing distance

Pixel Pitch Reference Chart

With 16:9 tiles, LED Cabinet configurations easily creates popular native resolutions including **Full HD** and **4k** and **8k**.

True Pitch	1 x 1		2 x 2		3 x 3		4 x 4		5 x 5		6 x 6	
1.0	640	360	1280	720	1920	1080	2560	1440	3200	1800	3840	2160
1.2	512	288	1024	576	1536	864	2048	1152	2560	1440	3072	1728
1.3	480	270	960	540	1440	810	1920	1080	2400	1350	2880	1620
1.4	440	248	880	496	1320	744	1760	992	2200	1240	2640	1488
1.6	384	216	768	432	1152	648	1536	864	1920	1080	2304	1296
1.8	340	192	680	384	1020	576	1360	768	1700	960	2040	1152
2.0	320	180	640	360	960	540	1280	720	1600	900	1920	1080
2.5	256	144	512	288	768	432	1024	576	1280	720	1536	864
2.9	220	124	440	248	660	372	880	496	1100	620	1320	744
4.0	160	90	320	180	480	270	640	360	800	450	960	540

True Pitch	7 x 7		8 x 8		9 x 9		10 x 10		11 x 11		12 x 12	
1.0	4480	2520	5120	2880	5760	3240	6400	3600	7040	3960	7680	4320
1.2	3584	2016	4096	2304	4608	2592	5120	2880	5632	3168	6144	3456
1.3	3360	1890	3840	2160	4320	2430	4800	2700	5280	2970	5760	3240
1.4	3080	1736	3520	1984	3960	2232	4400	2480	4840	2728	5280	2976
1.6	2688	1512	3072	1728	3456	1944	3840	2160	4224	2376	4608	2592
1.8	2380	1344	2720	1536	3060	1728	3400	1920	3740	2112	4080	2304
2.0	2240	1260	2560	1440	2880	1620	3200	1800	3520	1980	3840	2160
2.5	1792	1008	2048	1152	2304	1296	2560	1440	2816	1584	3072	1728
2.9	1540	868	1760	992	1980	1116	2200	1240	2420	1364	2640	1488
4.0	1120	630	1280	720	1440	810	1600	900	1760	990	1920	1080

Support your NEC LED array with an NEC Scaler Switcher Sender

Support your NEC LED array with industry leading hardware

Purpose built for large format LED displays, this industry leading digital LED Scaler / Switcher / Sender offers high performance video processing, user definable pixel mapping, picture in picture, full EDID and HDCP Support, USB & ethernet connectivity and remote web monitoring. It is packaged with NEC LED displays as standard.



Technical Specifications

Input	Qty	Resolution Specs			
CVBS	2	PAL / NTSC			
VGA	2	VESA Standard, support max. 1920×1200@60Hz input			
DVI	1	VESA Standard (support 1080i input), support HDCP			
SDI	1	480i, 576i, 1080i / P (SDI is on VX4S model only)			
HDMI	1	EIA / CEA-861 standard, in accordance with HDMI-1.3 standard, support HDCP			
DP	1	VESA Standard			
Output					
DVI LOOP	1	Consistent with DVI input			
VGA	1	1280×1024@60Hz	1440×900@60Hz	1680×1050@60Hz	1600×1200@60Hz
		1600×1200@60Hz - Reduced		1920×1080@60Hz	2560×816@60Hz
		2048×640@60Hz	1920×1200@60Hz	2304×1152@60Hz	2048×1152@60Hz
		1024×1280@60Hz	1536×1536@60Hz		
		Self-defined output resolution (Bandwidth optimization)			
		Horizontal resolution maximum 3840 pixels			
		Vertical resolution maximum 1920 pixels			

For more information:



nec.com.au



contactus@nec.com.au



131 632

Corporate Headquarters (Japan)
NEC Corporation
www.nec.com

Australia
NEC Australia Pty Ltd
www.nec.com.au

North America (USA)
NEC Corporation of America
www.necam.com

Asia Pacific (AP)
NEC Asia Pacific
www.sg.nec.com

Europe (EMEA)
NEC Enterprise Solutions
www.nec-enterprise.com

v19.09.03 | Xtreme Series Indoor LED

NEC Australia Pty Ltd reserves the right to change product specifications, functions, or features, at any time, without notice. Please refer to your local NEC representatives for further details. Although all efforts have been made to ensure that the contents are correct, NEC shall not be liable for any direct, indirect, consequential or incidental damages resulting from the use of the equipment, manual or any related materials. The information contained herein is the property of NEC Australia Pty Ltd and shall not be reproduced without prior written approval from NEC Australia Pty Ltd.

©2019 NEC Australia Pty Ltd. All rights reserved. NEC and NEC logo are trademarks or registered trademarks of NEC Corporation that may be registered in Japan and other jurisdictions. All other trademarks are the property of their respective owners. All rights reserved. Printed in Australia. Note: This disclaimer also applies to all related documents previously published.

NEC