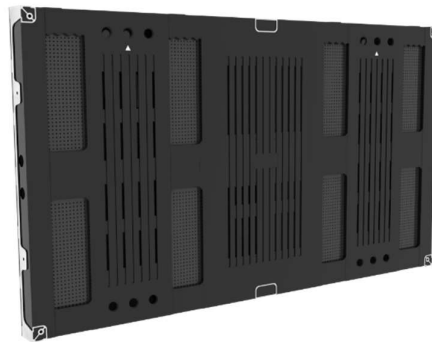
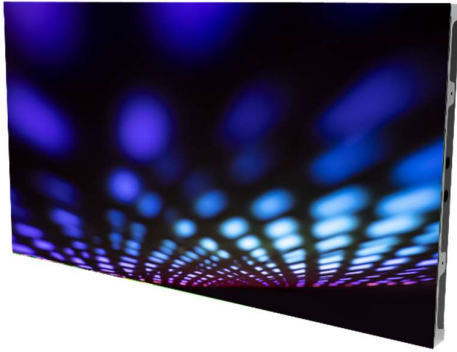


Product Information Sheet

Indoor 2.5 mm Black Face LED Panel – VESA Mount

LED-PRO-N-VESA-2.5



High Resolution VESA mount brilliance

For bezel-free viewing experiences using vivid LED technology, NEC's LED Solution delivers essential visualization for scalable large digital surfaces. Even for cost-conscious deployments for presentation and signage, NEC's LED Solution provides long lasting NEC quality with industrial-grade power supplies in easy to install.

NEC's innovative VESA mount compatible PRO-N SMD series generates crisp, clear viewing without fading or distortion in any ambient light, whether it's day or night, bright or dark.

Either free standing or for seamless integration into interiors, the slim design is sleek and chic as befits the latest innovation in digital content delivery. Benefit from excellent viewing angles, consistent vibrant colours, superb brightness and long lasting performance for high impact display projects.

Benefits

Care-free installation – VESA 400 mount compatible with bundled solutions that deliver all you need to get your LED video wall up and running.

Large scale for perfectly detailed imagery – completely bezel-less design with high contrast rates deliver an unhindered viewing experience.

Slim design – with a flush rear profile, LED modules can be integrated very close to the wall with no gap necessary due to minimal heat emission.

Front serviceable modules – with front access to the LED modules, maintenance is easy.

Visual excellence – high contrast and high brightness is inherent in LED delivery, benefit from NEC's long lasting quality.

Product information

Product Code	LED-NU025NRB-C10
Product Group	Indoor LED 2.5 mm LED panel with VESA 400 x 400 mount capability

Display

Pixel Configuration	3-in 1 SMD (Black)
LED type	SMD (2121)
Panel Size [mm]	1212 x 682
Aspect Ratio	16:9
Pixel Pitch [mm]	2.5
Brightness (max.) [cd/m²]	1000
Lifetime	100000 hrs (50% brightness)
Contrast Ratio (typ.)	6000:1
Viewing Angle [°]	160 horizontal / 160 vertical
Dimming Capability	256 levels
Colour Processing	16 bit
Colours	281 trillion
LED Driving Method	1/27 dynamic scan
Frame Rate	50/60 Hz
Refresh Rate [Hz]	< 3840
Colour Temperature [K]	2500 - 10000

Screen Resolution

Resolution	480 x 270
Resolution per m²	156,789
Number of Pixel per module [dot]	120 x 135
Number of Pixel per card [dot]	64,800

Connectivity

Input Video Digital	1 x HDMI 2.0; 1 x DP 1.2; 1 x DVI-D
Input Control	1 x GenLock; 1 x LAN; 1 x USB IN; 1 x USB OUT (Cascading)

Electrical

Total Power Consumption [W]	108 typ. / 314 max.
Power Consumption typ. [W]	130 per m² (normal use)
Power Consumption max. [W]	380 per m²

Environmental Conditions

Operating Temperature [°C]	-10 to 60
Operating Humidity [%]	10 to 90

Mechanical

Dimensions (W x H x D) [mm]	1212 x 682 x 58
-----------------------------	-----------------

Dimensions (W x H x D) [mm] per module	303 x 341 x 8
---	---------------

Weight [kg]	15
-------------	----

Additional Features

Shipping Content	LED Controller; LED Modules; Pixel Card Removal Tool; Spare Parts Kit
------------------	---

Manufacturer	NEC
--------------	-----

Serviceability	Front Service
----------------	---------------


IP Level	IP40
----------	------

Certifications	CCC; CE; FCC Class B; RoHS, RCM
----------------	---------------------------------

Warranty	3 Year Conditional Warranty
----------	-----------------------------

For more information:

 nec.com.au

 contactus@nec.com.au

 131 632

Corporate Headquarters (Japan)
NEC Corporation
www.nec.com

Australia
NEC Australia Pty Ltd
www.nec.com.au

North America (USA)
NEC Corporation of America
www.necam.com

Asia Pacific (AP)
NEC Asia Pacific
www.sg.nec.com

Europe (EMEA)
NEC Enterprise Solutions
www.nec-enterprise.com

v.21.07.21 | LED-PRO-N-VESA-2.5

NEC Australia Pty Ltd reserves the right to change product specifications, functions, or features, at any time, without notice. Please refer to your local NEC representatives for further details. Although all efforts have been made to ensure that the contents are correct, NEC shall not be liable for any direct, indirect, consequential or incidental damages resulting from the use of the equipment, manual or any related materials. The information contained herein is the property of NEC Australia Pty Ltd and shall not be reproduced without prior written approval from NEC Australia Pty Ltd.

©2021 NEC Australia Pty Ltd. All rights reserved. NEC and NEC logo are trademarks or registered trademarks of NEC Corporation that may be registered in Japan and other jurisdictions. All other trademarks are the property of their respective owners. All rights reserved. Printed in Australia. Note: This disclaimer also applies to all related documents previously published.

NEC